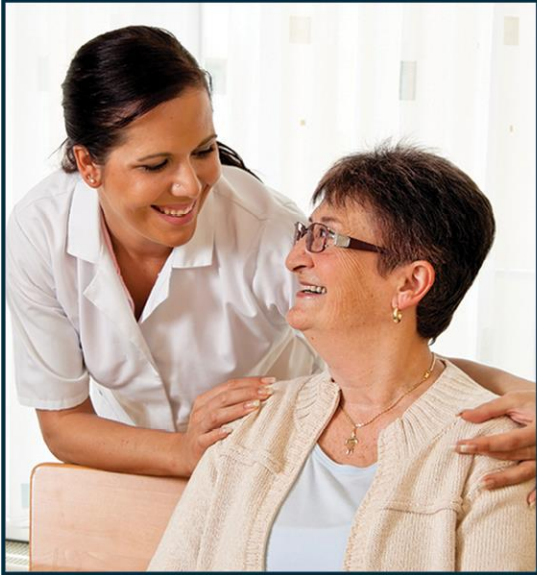




## HEALTH CARE AIDE – Evenings

Sundre Seniors' Supportive Living Facility in Sundre, AB



**JOB TITLE:** Health Care Aide – Evenings (Part-Time, Temporary for approximately 6 weeks).

**POSITION NO:** (SSL 20 – PT SL4D HCA 6) Minimum of 14 scheduled shifts and 112 hours per 28-day rotation 0.70 FTE. Shifts may be subject to change, as scheduling requires.

**EFFECTIVE DATE:** As soon as possible.

**SALARY RATE:** As per the MVSH salary schedule.

### MAIN DUTIES:

- Directly responsible to the LPN Team Lead and Resident Care Manager of the assigned Lodge.
- Provides personal care, support and customer service to Supportive Living SL4D residents.
- Assists with needs of residents and responds to emergency issues.

### QUALIFICATIONS:

1. A positive rapport with seniors, friendly and helpful.
2. A flexible, willing and positive attitude, customer service driven.
3. Must be dependable, reliable, and trustworthy.
4. Must be physically able to perform lifting, bending and repetitive tasks.
  - A medical may be required.
  - A high standard of hygiene and personal appearance.
5. Must have completed a recognized Health Care Aide certificate program.
6. Completed current First Aid and Cardiac Pulmonary Resuscitation (CPR) to be renewed every 2 years.
7. Must have a clear and current vulnerable sector check.

### CLOSING:

Until a suitable candidate is found.

### FORWARD RESUME TO:

Marie McMullen  
HR Coordinator, Recruitment  
Mountain View Seniors' Housing  
hr@mvsh.ca  
Phone: 403-556-2957 ext 721  
Fax: 587-796-0776

*We thank all applicants for their interest, only those selected for an interview will be contacted.*

Our Vision - We enhance lives by providing quality care and self-sustainable living through innovative leadership.

